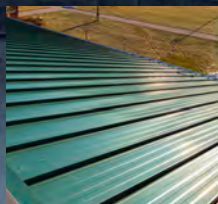
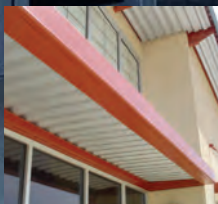


GARLAND METAL SOLUTIONS

Honest Performance... Trusted Protection

SCESC



COMPLEMENTING YOUR DESIGNS...BEAUTIFULLY

Intelligently designed and inherently beautiful, Garland's premium metal solutions provide honest performance, trusted protection and an alluring style to complement the design of any building. Defined by incredible strength and proven performance, Garland's premium metal solutions provide seamless waterproofing protection that spans decades rather than years.





R-Mer® Shield
Structural Standing
Seam Panel

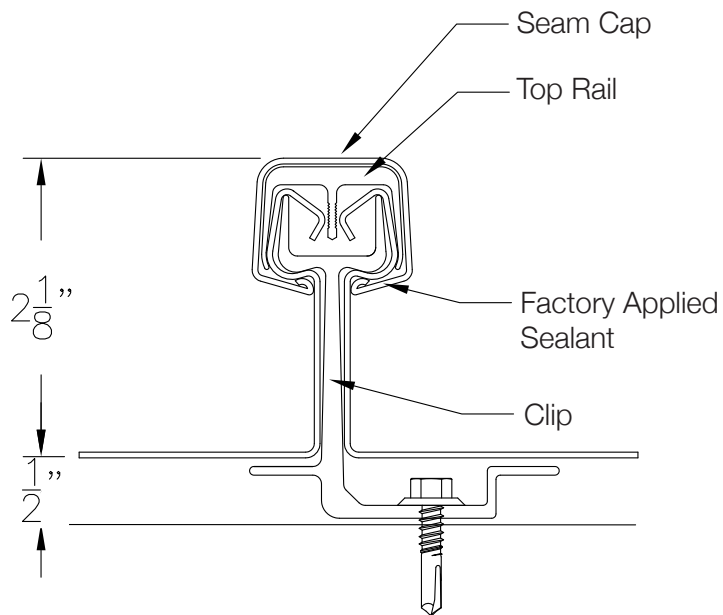
R-Mer® Span
Structural Standing
Seam Panel

R-Mer® Wall-Pan
Snap-Seam
Structural Wall Panel

R-Mer® Loc
Snap Seam Structural/
Architectural Panel

Symmetric Panel	■	■		
Concealed Single Piece Clip	■	■	■	■
Isolation of Sealant from Clip	■	■	■	■
Steel	■	■	■	■
Aluminum	■	■	■	■
Zinc	■	■	■	
Copper	■	■	■	
Stainless Steel	■	■		
Fluorocarbon Finish	■	■	■	■
Clear Acrylic-Coated Galvalume® ¹ Finish	■	■	■	■
Mill Finish Aluminum	■	■	■	■
Wind Resistance Testing	■	■	■	■
Water Infiltration Testing	■	■	■	■
Air Infiltration Testing	■	■	■	■
Allowance for Unlimited Thermal Movement	■	■	■	■
LEED® ² High Recycled Content	■	■	■	■
LEED® ² High Solar Reflective Index	■	■	■	■







R-MER SHIELD

Structural Standing Seam Panel System

Performance Redefined

R-Mer Shield standing seam roof system is designed to redefine performance expectations in the roofing industry. This innovative, high-performance structural metal roof system can withstand wind speeds over 200 mph, offering unrivaled strength, durability and waterproofing protection for 30 years or more.

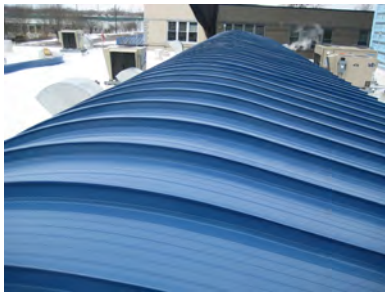
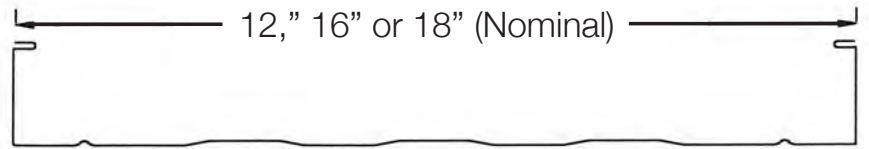
In addition to its sheer strength, R-Mer Shield's patented design provides unlimited thermal movement, eliminating concerns of buckling or separation due to temperature extremes. The system design also allows for the installation of wider panels (up to 24 inches) and wider clip spacing, reducing labor costs and simplifying installation.



R-MER SPAN

Structural Standing Seam Panel System

Proven Strength, Improved Aesthetics



The R-Mer Span standing seam roof system is structurally sound, functionally versatile and has provided decades of proven performance in windstorm and water penetration resistance. This premium metal system can be used on slopes down to a ¼-inch per foot and offers the tightest curving capability in the industry to satisfy the most ambitious designs. Its unique watertight profile contains mesas throughout the panel to minimize “oil canning.”

| Drinking Water Pumping Station



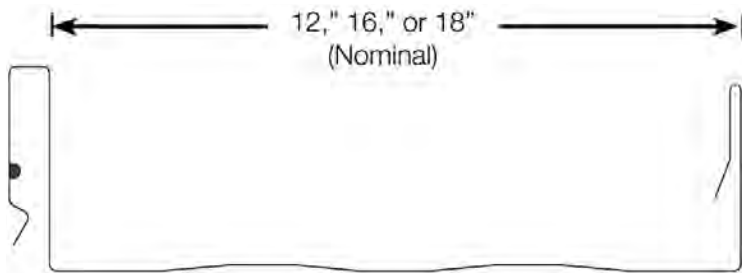
R-MER LOC

Architectural and Structural
Standing Seam Roof System

Durability and Versatility Combined



| Higher Education



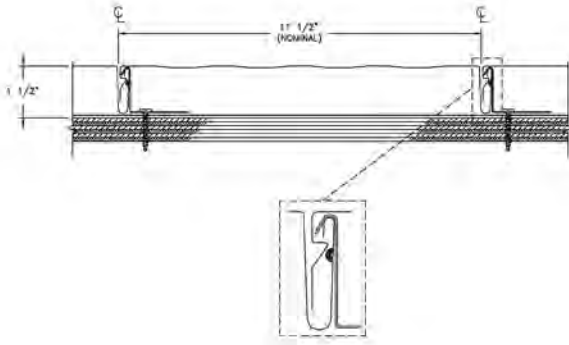
R-Mer Loc architectural and structural standing seam roof system can be installed over open framing without the need for a structural deck over a slope of three inches per foot. Its heavy-duty, 18-gauge, one-piece concealed-clip design accommodates thermal movement. R-Mer Loc is ideal for re-roof applications, mansards, and new construction.



R-MER WALL PAN

Snap-Seam Panel System

Simple Installation, Lasting Protection



This easy-to-install structural wall panel system is designed to stop moisture penetration into the most vulnerable part of the structure – the walls. R-Mer Wall-Pan offers strength, weather resistance and a concealed-clip design that is ideal for parapet walls and building facades. R-Mer Wall-Pan panels provide a flush seam appearance with a vertical orientation in mesa, vee-groove or smooth profiles.

Garland now offers a diverse line of architectural wall panel solutions through its sister company, IMETCO (Innovative Metals Company, Inc.), a subsidiary of Garland Industries, Inc.



RAINSCREEN

Garland Rainscreen Systems

Walls That Perform

Properly designed and engineered rainscreen systems effectively manage moisture and energy transfer through a wall system, creating healthier, more comfortable and energy efficient buildings.

A high-quality wall panel cladding system is essential in protecting the wall assembly against rain, negative wind pressures and UV radiation. Garland's R-Mer Wall-Pan as well as a number of architectural wall panels are available for use as the cladding system in the rainscreen assembly.



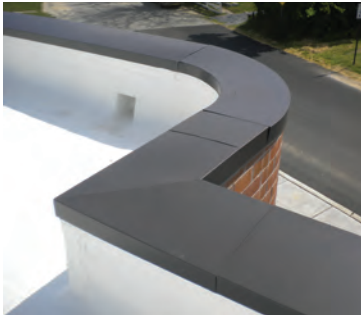
Although site-specific metal wall designs will vary according to conditions of geography, climate, building function, and so on, the fundamental components of a high-performance wall system are shown here.

METAL EDGE

Metal Edge Options for Every Application

Seamlessly Integrated Metal Accessories

Garland's ANSI/SPRI ES-1 compliant metal edge solutions are designed to protect the critical areas of the roof perimeter where the waterproofing systems terminate at the vertical wall. Proper edge securement is critical to wind uplift performance and to ensuring a watertight building envelope solution.



THE EXOTIC METAL DIFFERENCE



R-Mer Edge

Coping

This premium metal edge system offers a simple, strong design that will enhance the appearance and watertight performance of any building.

In addition to its standard material offerings, Garland offers zinc, copper and stainless steel options, providing design professionals with added flexibility and customization. In terms of performance, exotic metals are the most sustainable, longest lasting materials available and offer decades of waterproofing protection with an extremely low life-cycle cost.

R-Mer Edge

Snap-On or Extruded Fascia

This architectural system is designed to protect the critical intersection between the roof and wall system.



Adhered Snow Guard™

Accessories

Manufactured from aircraft-grade aluminum, Garland Snow Guard accessories can be color-coordinated with any metal roof.

R-Mer Soffit

Architectural Systems

Available in both solid and vented profiles up to 12-foot lengths, this architectural system complements the perimeter edge system for an impressive look that is backed by a sole source warranty.

S-5!™

Snow Retention System

Designed to meet severe snow loading requirements without panel-damaging fasteners or adhesives and is compatible with Garland's R-Mer Shield, R-Mer Span and R-Mer Loc metal roof systems.

STANDARD COLORS



Sandstone



Colonial Red



Emerald Green



Regal White



Suede



Dark Bronze



Mocha



Portland Stone



Patriot Blue



Cadet Gray



Sierra White



River Rock



Pewter



Still Water



Sea Mist



Almond

DESIGNER COLORS*



Terra Cotta



Slate Blue



Heritage Red



Carbon Black



Harvest Wheat



Midnight

PREMIUM COLORS*



Sterling Silver



Cranberry Fleck



Copper Penny



Satin Smoke



Preweather Galvalume®



Gold Mist

COLOR SELECTOR

VINTAGE STONE COLLECTION



Charcoal Gray



Cobblestone



Star Blue Quartz



Dark Jade



Imperial Topaz



Tiger Iron

EXOTIC METALS



Copper



Texture
(Stainless Steel)

GARLAND ZINC LINE



Zinc: Black



Zinc: Gray

NOTE: Colors are only a representation. Please contact your local representative for color chart and sample.
*Minimum quantities and extra cost may apply.

Over 100 Years of The Garland Company, Inc.

Founded by J.B. Wise in 1895, as a supplier of refining products, The Garland Company, Inc. has evolved from a local manufacturer and distributor of oils, greases, and paints to a worldwide leader in manufacturing high-performance roofing and building maintenance systems for the commercial and institutional markets. We've prevailed by remaining dedicated to our customers, continually developing innovative solutions to meet the ever-changing needs of a demanding market.

Today, the Garland network of employee-owner representatives is servicing customers around the world with the same vision, enterprise, and integrity demonstrated by J.B. Wise back in 1895. Dedicated sales representatives remain the driving force of our success by serving the customer with an unwavering commitment to quality. Strategically located throughout the United States, Canada, and the United Kingdom, Garland representatives are ideally positioned to provide quality building envelope solutions for single and multi-property facilities.

- Sustainable roofing solutions
- High-performance modified roof systems
- Fluid applied urethane and acrylic systems
- *Architectural and structural standing seam metal roof systems*
- *Metal systems and accessories*
- Rooftop maintenance and restoration products
- Preventive maintenance programs
- Roof-asset management services
- Design-build construction management
- *Engineering services*
- Flooring repair and restoration solutions
- Financing options

For more information, visit us at: www.garlandco.com

The Garland Company, Inc.
3800 East 91st Street
Cleveland, OH 44105
FAX: 216-641-0633
Phone: 216-641-7500
Toll Free: 1-800-321-9336

Garland Canada Inc.
209 Carrier Drive
Toronto, Ontario
Canada, M9W 5Y8
FAX: 416-747-1980
Phone: 416-747-7995
Toll Free: 1-800-387-5991
(Only in Canada)

The Garland Company UK, LTD
Unit 5, Glevum Works, Upton Street
Gloucester, UK GL1 4LA
FAX: 01452 330 657
011 44 1452 330 657 (Outside UK)
Phone: 01452 330 646
011 44 1452 330 646 (Outside UK)
Toll Free: 0800 328 5560 (Only in UK)

Galvalume®1 is a steel pre-treatment and a registered trademark of BIEC International Inc.

LEED®2 is a registered trademark of The U.S. Green Building Council.

UL®3 (Underwriters Laboratories Inc.) is a registered trademark of Underwriters Laboratories Inc.

All ™ and ® are trademarks of The Garland Company, Inc. or Garland Canada Inc. unless otherwise specified.



For more Garland product information scan QR Code