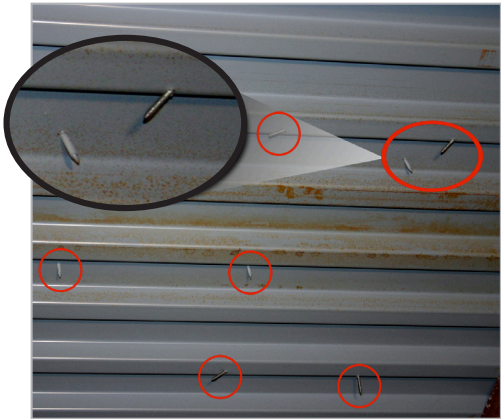


# Insul-Lock® HR

Insul-Lock HR is a single step application, two-component, VOC compliant insulation adhesive. It is designed to give you the benefits of a two-component insulation adhesive without the errors that result from mixing the product. Insul-Lock HR bonds to structural decks, base sheets, approved insulation boards, smooth and mineral surfaces and properly prepared built-up roofs.



## Eliminate noise and dust from entering your building envelope

By eliminating fastener penetration through your roof system, you eliminate the ability for noise and dust to enter your building, and pollute the work environment.



## Eliminate fastener damage to your structural deck

By eliminating fasteners penetrating through the roof system you reduce further damage to a structural deck and the possibility for moisture penetration through the fastener holes.



## Reduce labor costs

Insul-Lock HR significantly reduces insulation installation time over traditional mechanically fastened options, which will reduce the overall cost of the project.

# Insul-Lock® HR

## Features

## Benefits

### **Ease of Installation**

Insul-Lock HR is an easy to apply insulation adhesive that does not require expensive two-component mixing carts. Insul-Lock HR is a self contained two-component insulation adhesive that mixes through a static mixing tip. This requires no mixing on the contractors part, which reduces time and errors

### **Low Odor**

The low odor nature of this product makes it a perfect fit for sensitive areas such as schools and hospitals, and a must for environmentally conscious facilities. Insul-Lock HR is a VOC compliant adhesive that will not disrupt the building's occupants

### **No Deck Penetration**

Reducing the number of fasteners that penetrate the deck lessens the possibility of structural damage and moisture entry while preventing the disruption of interior operations. Eliminating fasteners not only prolongs the life of the waterproofing system, but it also eliminates the potential for thermal bridging and a future cause of leaks

### **Versatile**

Insul-Lock HR is compatible with a wide variety of insulation and deck types including wood fiber, fiberglass, ¾" perlite, dens deck, polyisocyanurate, and polystyrene. It also provides a fast set in a variety of temperatures

### **High-Rise**

Insul-Lock HR provides the ability to recover gravel roofs without using fasteners. Insul-Lock HR will rise and adhere insulation boards to the deck over irregular surfaces eliminating the labor cost involved in fastening to all types of decks

For more information, visit us at: [www.garlandco.com](http://www.garlandco.com)



#### **The Garland Company, Inc.**

3800 E. 91st Street  
Cleveland, OH 44105  
FAX: 216-641-0633  
Phone: 216-641-7500  
Toll Free: 1-800-321-9336

#### **Garland Canada Inc.**

209 Carrier Drive  
Toronto, ON M9W 5Y8  
FAX: 416-747-1980  
Phone: 416-747-7995  
Toll Free: 1-800-387-5991 (Canada Only)

#### **The Garland Company UK, LTD**

Unit 5, Glevum Works, Upton Street  
Gloucester, UK GL1 4LA  
FAX: 01452 330 657  
Phone: 01452 330 646  
Nat. Tel.: 0800 328 5560 (Only in UK)

Insul-Lock is a trademark of The Garland Company, Inc.

© 2013 Garland Industries, Inc.