

Metal | Standing Seam

R-Mer Shield™

R-Mer Shield's patented design and unrivaled strength allow it to withstand a wide range of temperature extremes and winds over 200 mph, providing outstanding waterproofing protection for decades.



High-Performance Design

- Withstands severe wind uplifts
- Unlimited thermal expansion and contraction



Labor Savings

- Installs in 2 directions at once
- Panels can be replaced individually



Watertight

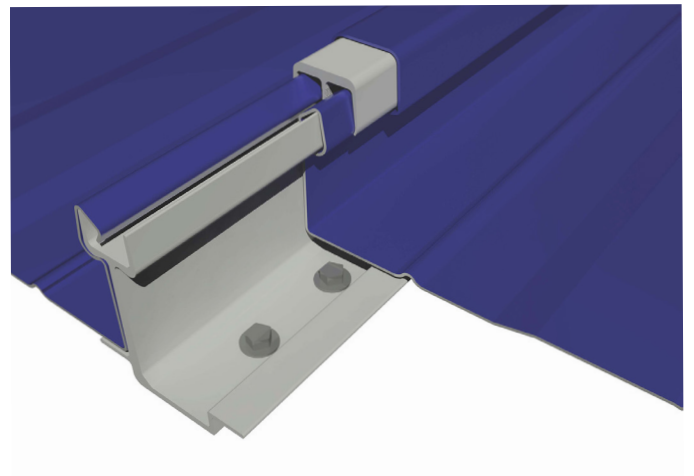
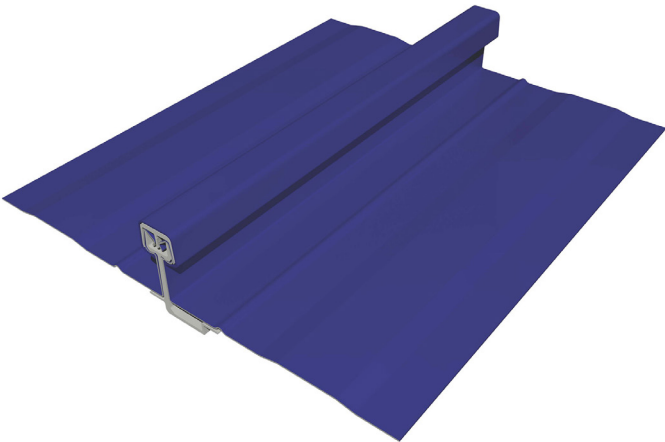
- Sealant isolated from the clip
- Ensures long-term leak-free environment



Patented design to withstand extreme conditions.

System purpose-built with the contractor in mind.

The aesthetics and performance of standing seam metal.



The Garland Company, Inc

3800 East 91st Street, Cleveland, OH 44105

Phone: 216-641-7500 | Toll Free: 800-321-9336 | Fax: 216-641-0633

www.garlandco.com

0924 ©2024 The Garland Company, Inc.

R-Mer Shield™

Features & Benefits

High Performance Design

Withstands Severe Wind Uplifts

R-Mer Shield's high vertical seam and top rail design allows the panel legs to be held in place when uplift pressures act upon the panels, resulting in resistance in excess of 200 psf.

Resists Extreme Temperatures

Innovative design alleviates the effects of unsightly oil-canning and prevents seam buckling, resulting in a longer service life.

Labor Savings

Bi-Directional Installation

R-Mer Shield's symmetrical panel design allows panels to be clipped in from the center point outward in both directions, resulting in fast and easy installation.

Wider Panels

With its stronger clip, R-Mer Shield is able to have wider clip spacing resulting in fewer materials, lower cost of labor, and unrivaled strength.

Individual Panel Replacement

The symmetrical panel design means that should a panel require replacement, that single panel can be swapped out without compromising any adjacent panels or spending unnecessary time.

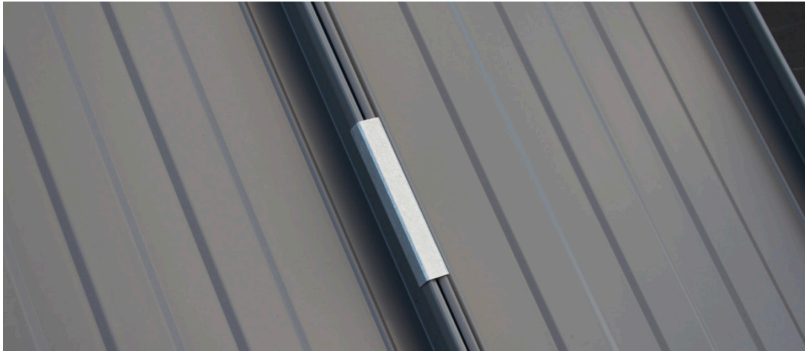
Watertight

Sealant Isolated From Clip

Unlike most standing seam panels, R-Mer Shield isolates the seam sealant from contact with the clip, which protects it from breaking down as the panel moves over time and keeps the primary waterproofing element of the assembly intact longer.

Leak-Free Performance

R-Mer Span is available in 12, 16, or 18" wide panels, in 20, 22, or 24-gauge steel or .032, .040, or .050 aluminum, copper, stainless steel or zinc; and in a wide palette of colors.



R-Mer Shield™
Available in Steel,
Aluminum, Zinc, Copper,
and Stainless Steel

** Based on qualified colors*

Advantages of R-Mer Shield™



Withstands wind
> 200 psf



Patented design for
leak-free performance



Designed for
faster installation



Resists oil-canning across
extreme temperatures



Longer service life



The Garland Company, Inc

3800 East 91st Street, Cleveland, OH 44105

Phone: 216-641-7500 | Toll Free: 800-321-9336 | Fax: 216-641-0633

www.garlandco.com

0924 ©2024 The Garland Company, Inc.