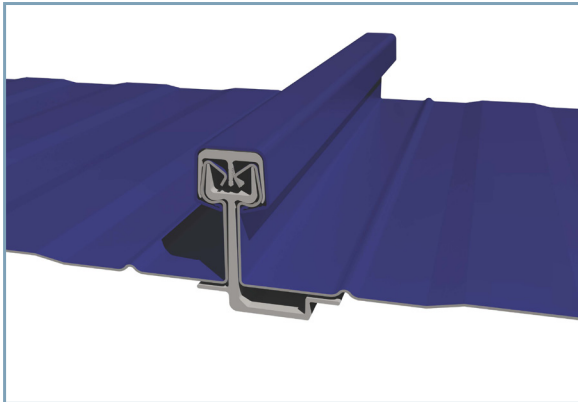
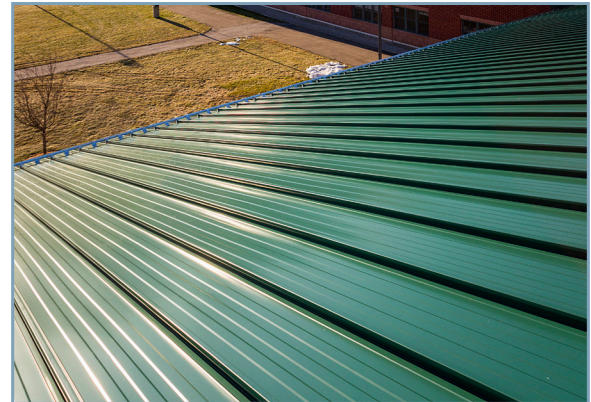


R-Mer® Shield Standing Seam Roof System

Garland's R-Mer Shield standing seam roof system is designed to redefine performance expectations in the roofing industry. This innovative, high-performance structural metal roof system can withstand wind speeds over 200 mph, offering unrivaled strength, durability and waterproofing protection for 30 years or more. In addition to its sheer strength, R-Mer Shield's patented design provides unlimited thermal movement, eliminating concerns of buckling or separation due to temperature extremes. R-Mer Shield is available in steel, aluminum, zinc, copper and stainless steel.



Garland's newest generation of industry-leading, high-performance, structural standing seam roof system boasts a 2-1/16-inch high vertical seam with an extruded aluminum clip and top rail system that provides outstanding wind uplift performance.



The high-performance clip and seam design on the R-Mer Shield system allows for unlimited thermal expansion and contraction to alleviate the effects of oil-canning and prevent seam buckling, resulting in a longer service life.



R-Mer Shield's base clip and top rail design allows for wider clip spacing and wider panels (up to 24.75 inches), which results in fewer materials and lower cost of labor while maintaining superior strength.



Separation of the sealant from the clip protects the system from the elements and prevents common concerns associated with thermal expansion and contraction, providing extraordinary watertight protection.

R-Mer® Shield Standing Seam Roof System

Features

Base Clip With Top Rail Design

Continuous Top Rail

Symmetrical Panel Design

Unlimited Thermal Movement

Sealant Isolation from Clip

Benefits

Equates to wider clip spacing and wider panels (up to 24.75"), which results in fewer materials, lower cost of labor and unrivaled strength. This design allows the panel legs to be held in place when uplift pressures act upon the panels, resulting in extremely high wind uplift resistance in excess of 200 psf allowable.

Allows the panel system to be installed in high wind regions, using wider panels, for a stronger seam and increased spanning capability. The top rail can also reduce the amount of framing components in a metal retrofit application, for a lower overall cost of the project.

Allows the roof to be installed from the center point and then outward in both directions, resulting in easy and fast installation and replacement. Should a panel need replaced, only that panel needs to be removed.

R-Mer Shield's high-performance clip and seam design allows for the normal occurrence of expansion and contraction with changes in temperature. The innovative design alleviates the effects of unsightly oil-canning and prevents seam buckling, resulting in a longer service life.

Isolating the sealant from the clip in the R-Mer Shield system is essential its the long-term watertight performance. If the seam sealant contacts the clip, which is common in the majority of standing seam panels, the sealant will break down over time as the panel slides over the clip due to expansion and contraction. The main waterproofing component of the system is compromised, leaving the roof susceptible to leaks. R-Mer Shield solves this issue by isolating the sealant from the clip, allowing the system to remain watertight.

For more information, visit us at: www.garlandco.com



The Garland Company, Inc.

3800 E. 91st Street
Cleveland, OH 44105
FAX: 216-641-0633
Phone: 216-641-7500
Toll Free: 1-800-321-9336

Garland Canada Inc.

209 Carrier Drive
Toronto, ON M9W 5Y8
FAX: 416-747-1980
Phone: 416-747-7995
Toll Free: 1-800-387-5991 (Canada Only)

The Garland Company UK, LTD

Unit 5, Glevum Works, Upton Street
Gloucester, UK GL1 4LA
FAX: 01452 330 657
Phone: 01452 330 646
Nat. Tel.: 0800 328 5560 (Only in UK)

R-Mer is a registered trademark of The Garland Company, Inc. and Garland Canada Inc.
Garland is a trademark of The Garland Company, Inc.

© 2015 Garland Industries, Inc.